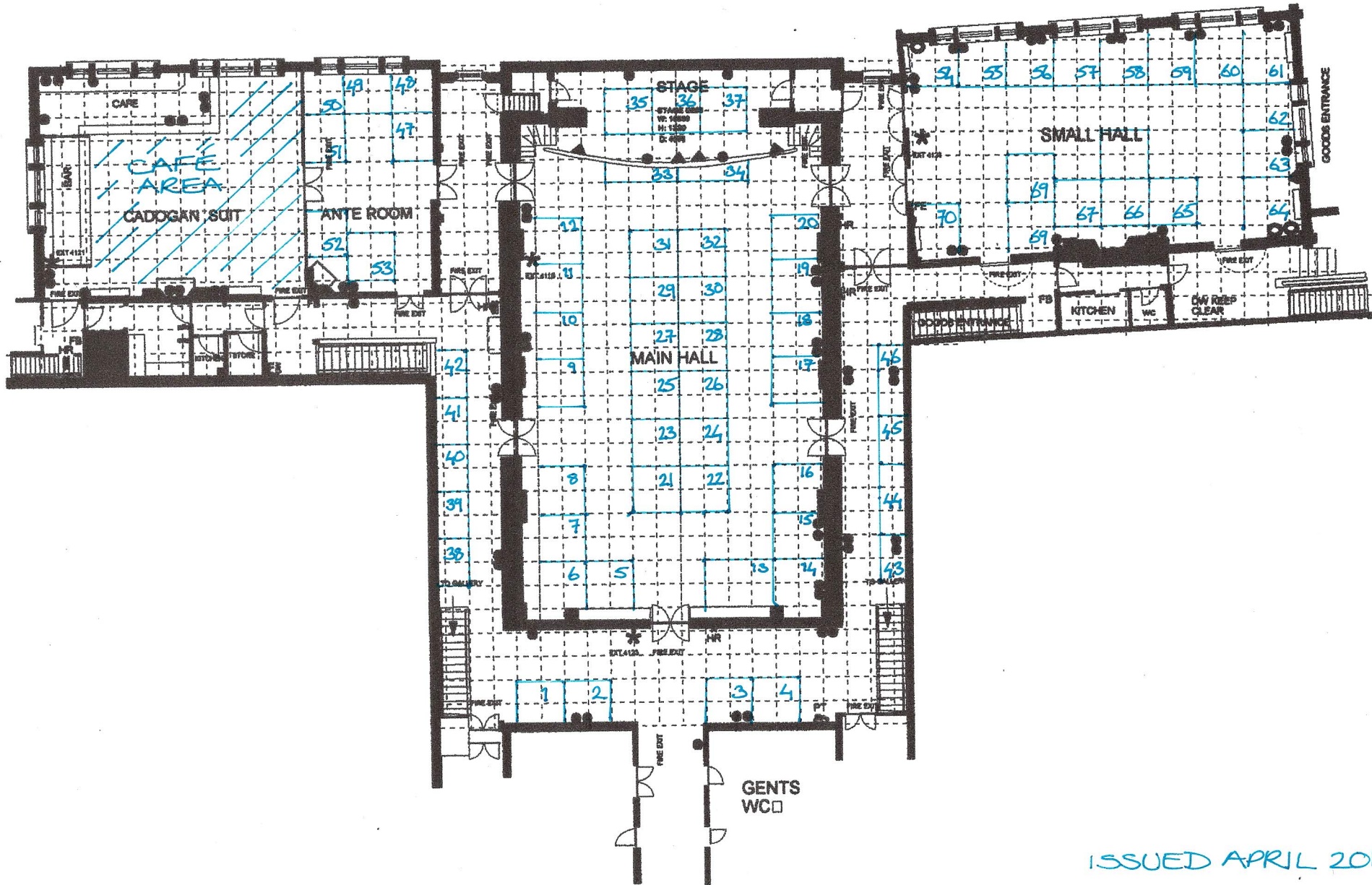


CHELSEA OLD TOWN HALL
TEXTILE SOCIETY FAIR
SUNDAY 2 OCTOBER, 2011

N.B. FINAL LAYOUT MAY VARY SLIGHTLY FROM
THIS PLAN. POWER ONLY AVAILABLE TO SOME
WALL STANDS AND MAIN HALL STAGE STANDS.

MAIN PLAN



ISSUED APRIL 2011.